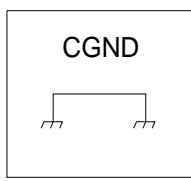


SK2
22WAY SIDE ENT FLEXI BRD SKT

Pins 4,6,7,14,15,19,20,21,22,2 are No-Connect

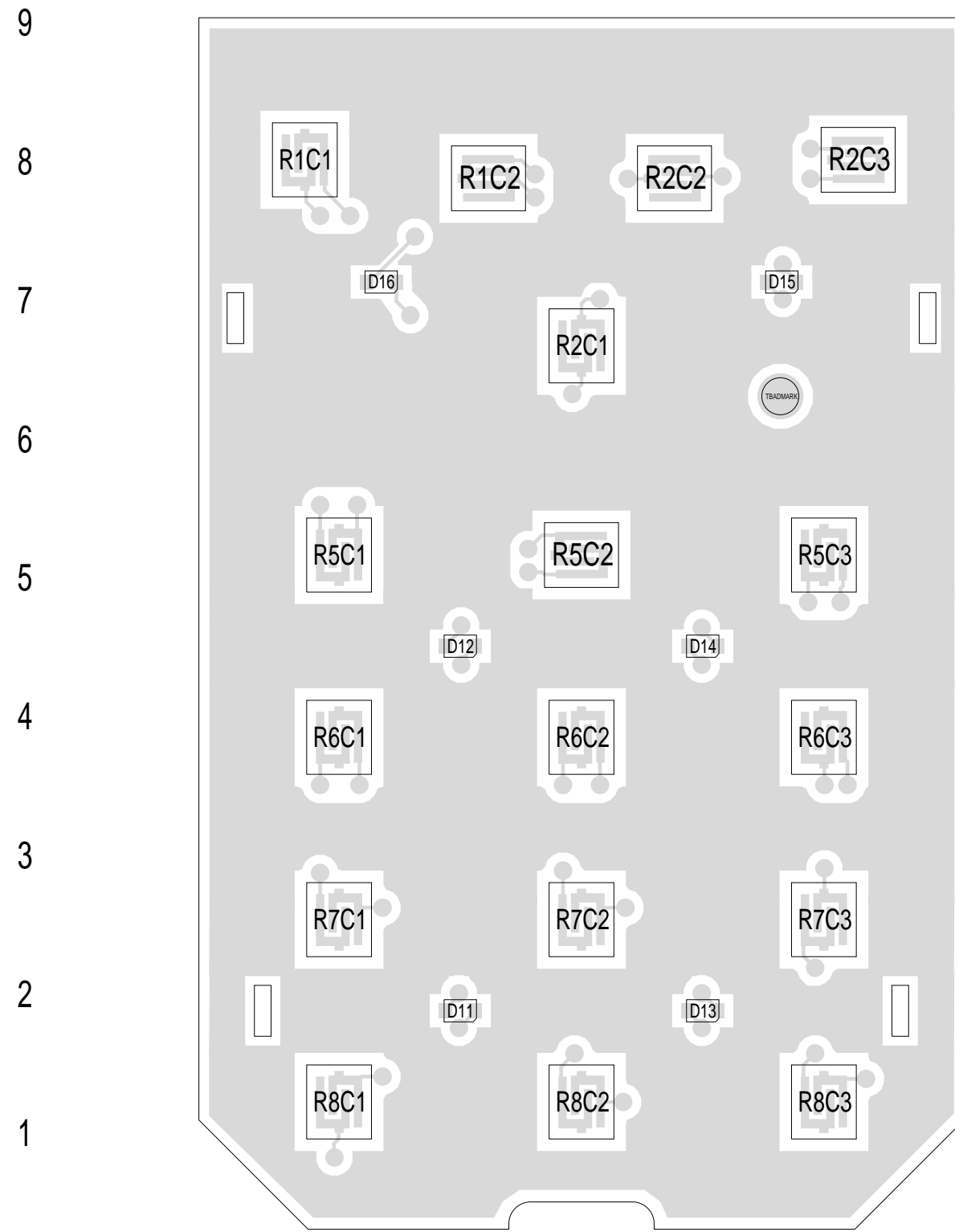
TAIT BADMARK
TAIT BADMARK



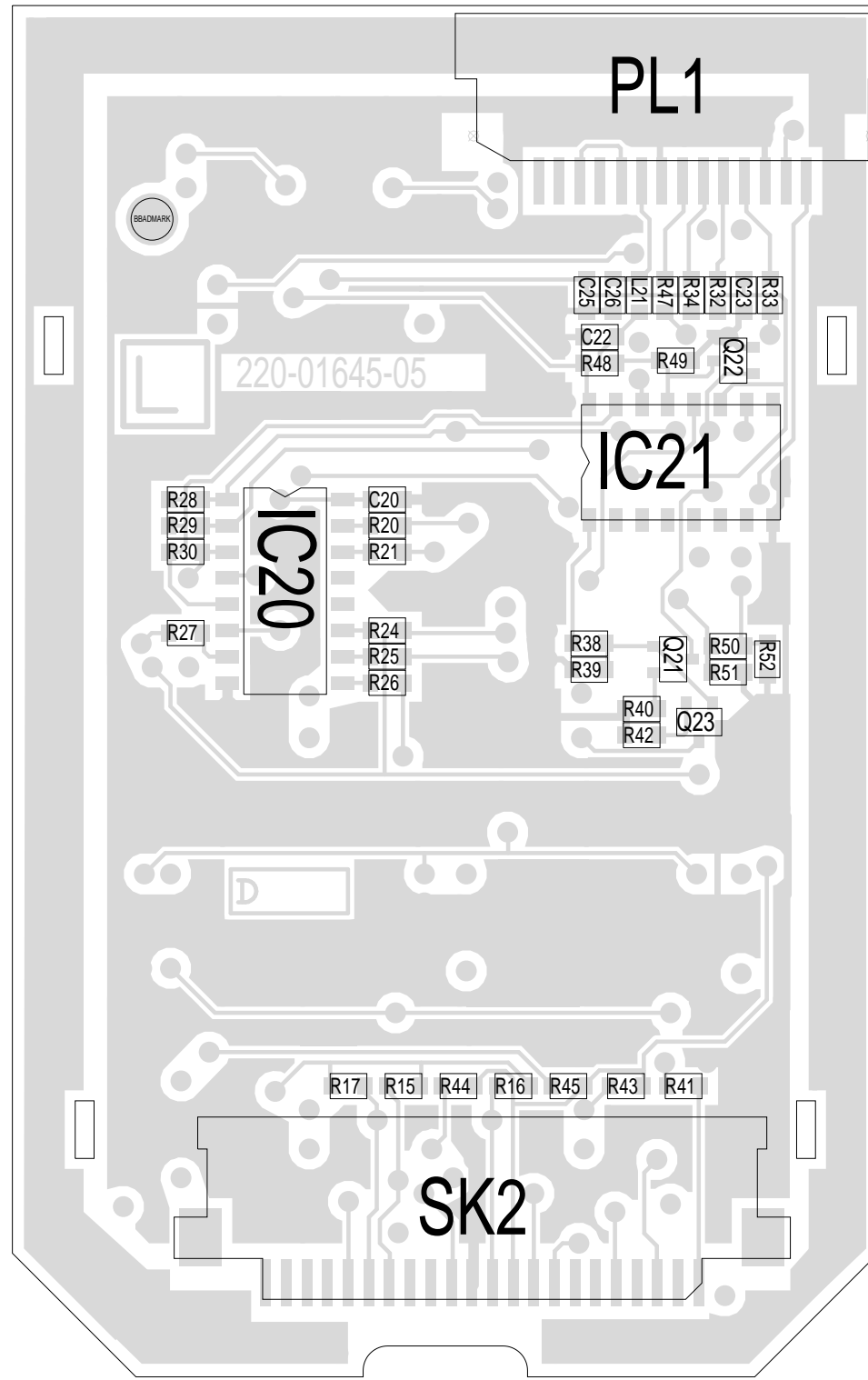
PL1
Pins 1,2 are No-Connect
14WAY SIDE ENTRY SKT

05A	CCO NO 1645-005	BRD			14-02-01
02A	CCO NO 1645-002	BRD			08-09-00
01B	CCO NO.1645-001 CAMPANEL CHANGE	BRD			25-08-00
01A	THE FIRST SLIM USER INTERFACE	BRD			19/07/00
REV/ISS	AMENDMENTS	DRAWN	CHKD	D.O.	APVD DATE

© TAIT ELECTRONICS			
T5000			
SLIM ORCA KEYPAD INTERFACE			
IPN:	ISSUE:	ID:	
220-01645-05	A	2.SC. 1	
PROJECT:	DESIGNER:	FILE NAME:	FILE DATE:
ORCA	BRD	164505a	14-Feb-01
			NO.SHEETS: 1



TAIT ELECTRONICS	IPN: 220-01645-05	ISS: A	ID: 1.TA	DATE: 14 Feb 2001
SLIM TOP UI PCB LAYOUT - TOP SIDE				



9
8
7
6
5
4
3
2
1

F E D C B A

TAIT ELECTRONICS IPN: 220-01645-05 ISS: A ID: 4.BA DATE: 14 Feb 2001
SLIM TOP UI PCB LAYOUT - BOTTOM SIDE